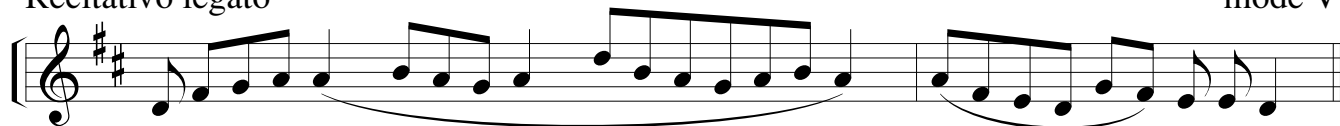


KYRIE

Recitativo legato

mode V



Ky-ri - e e - le - i - son.



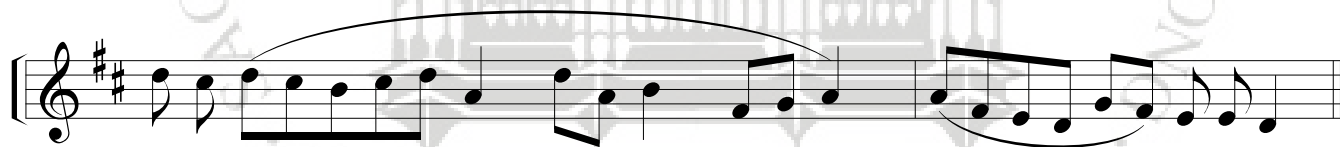
Ky-ri - e e - le - i - son.



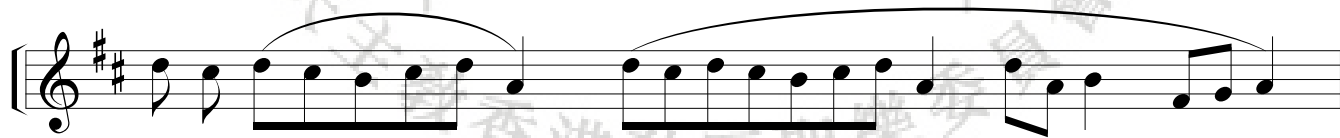
Chri - ste e - le - i - son



Chri - ste e - le - i - son.



Ky - ri - e e - le - i - son.



Ky - ri - e (e)



e - le - i - son.

詞：Kyrie eleison (Greek) = 上主！求祢垂憐
Christe (Latin) eleison = 基督！求祢垂憐
曲：Missa de Angelis (天使彌撒曲) 15-16 世紀
Graduale Romanum - Ordinarium Missae VIII